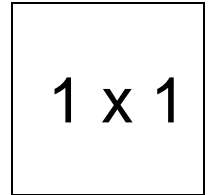


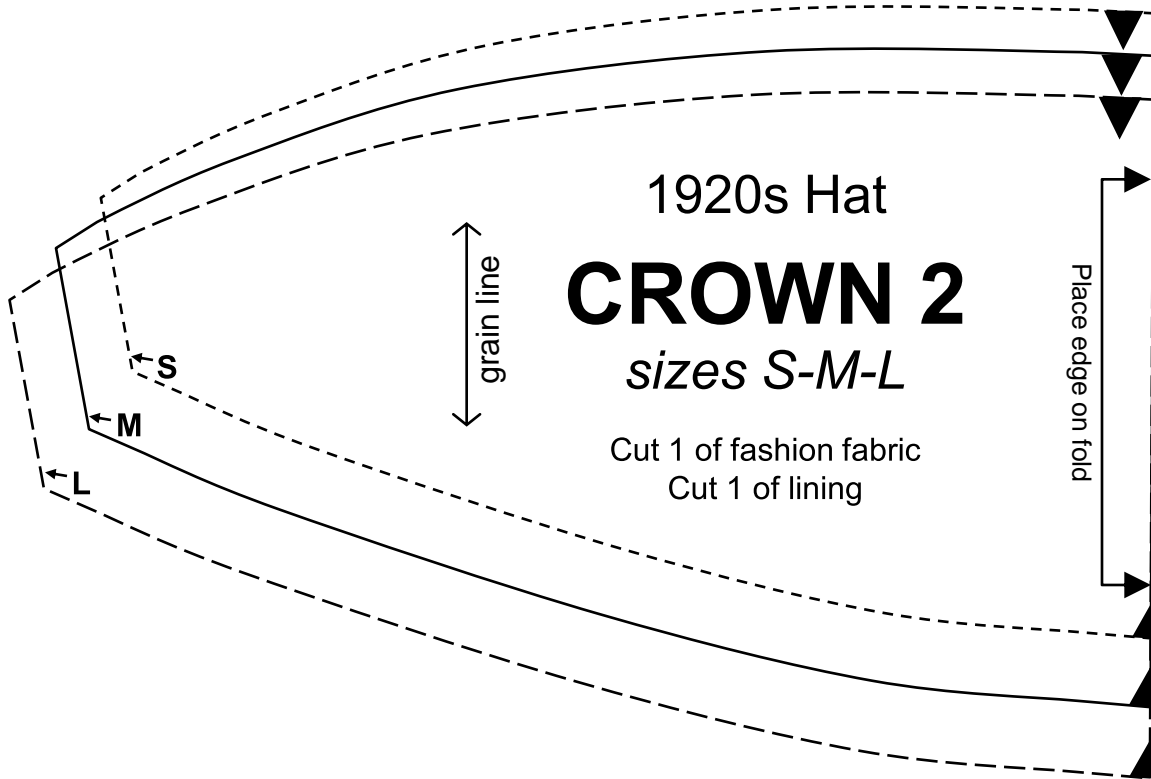
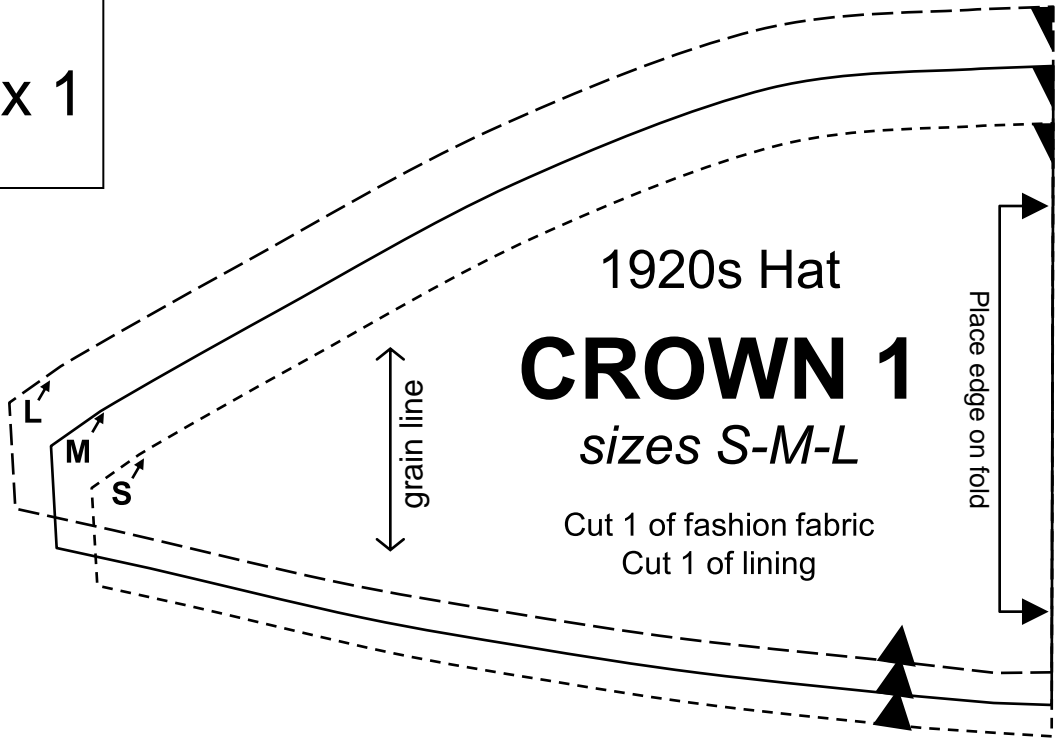
# 1920s Hat

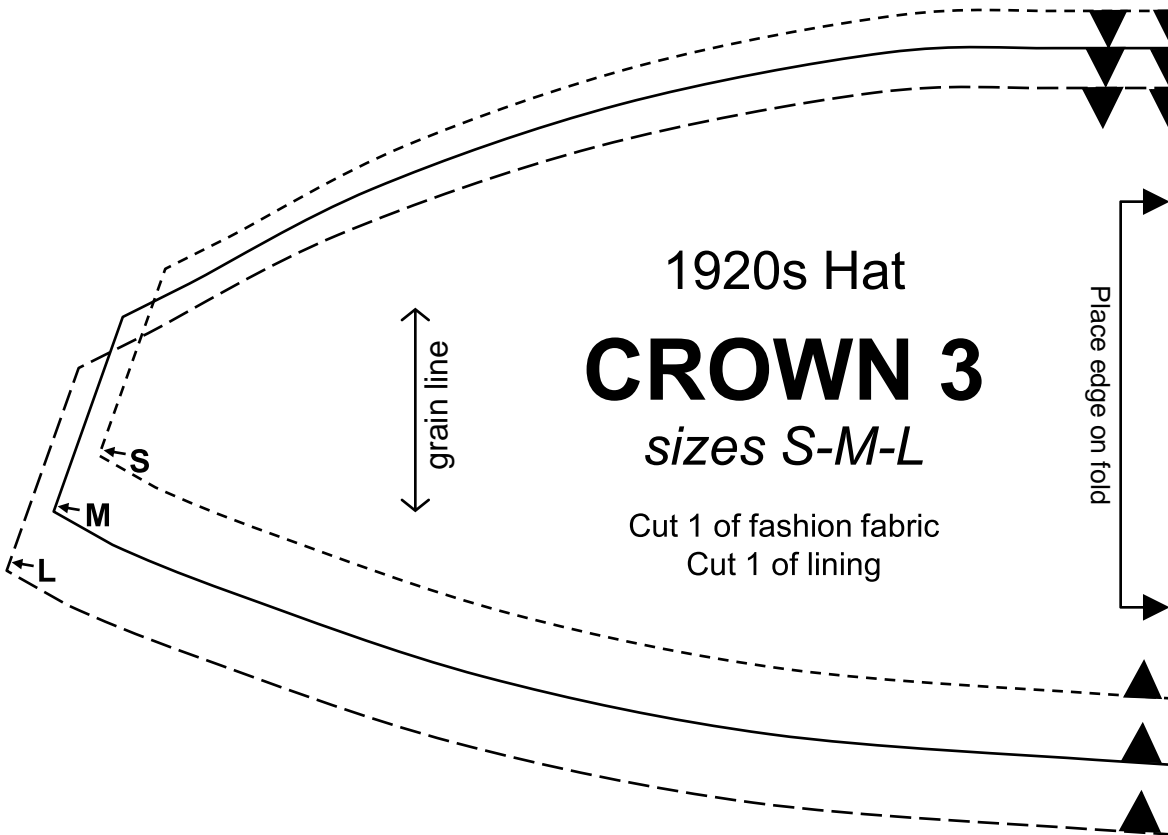
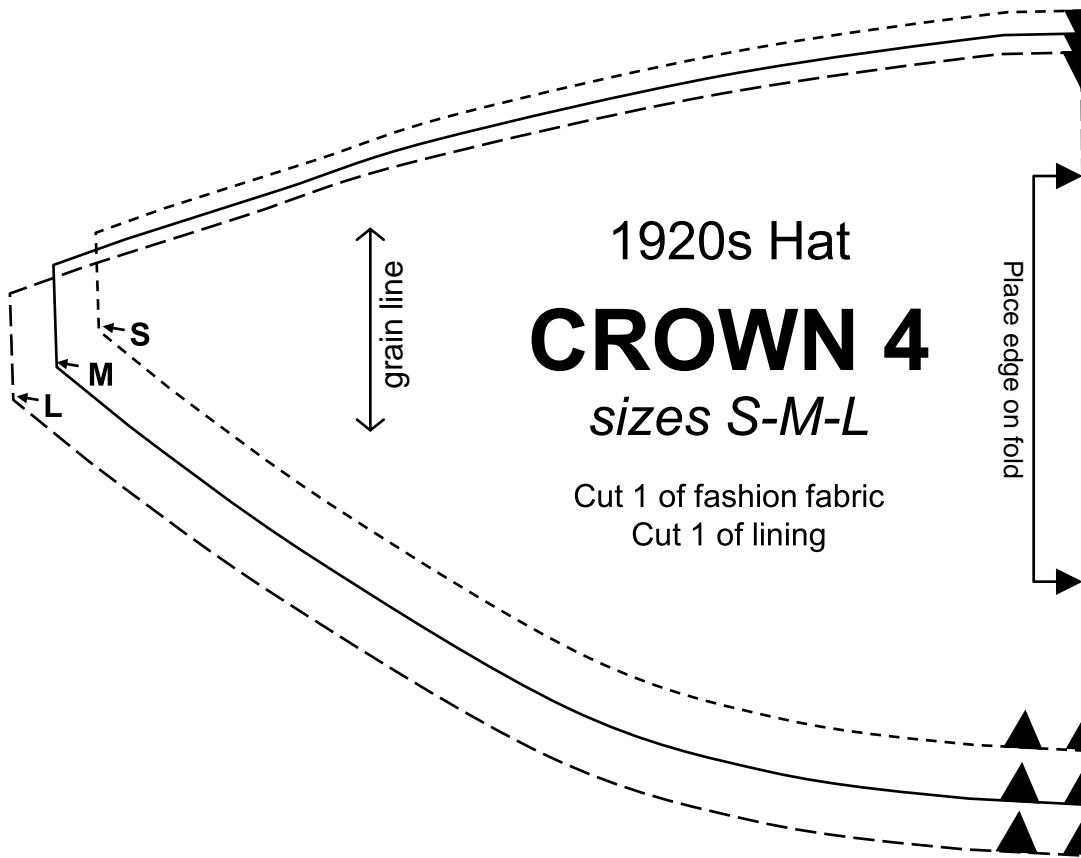
## **Important note:**

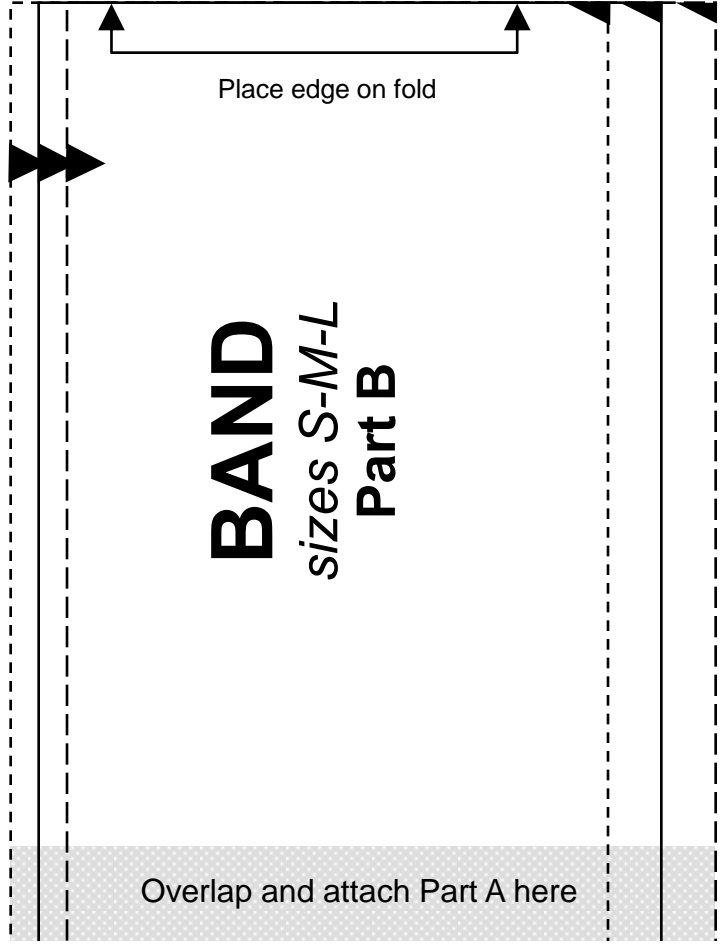
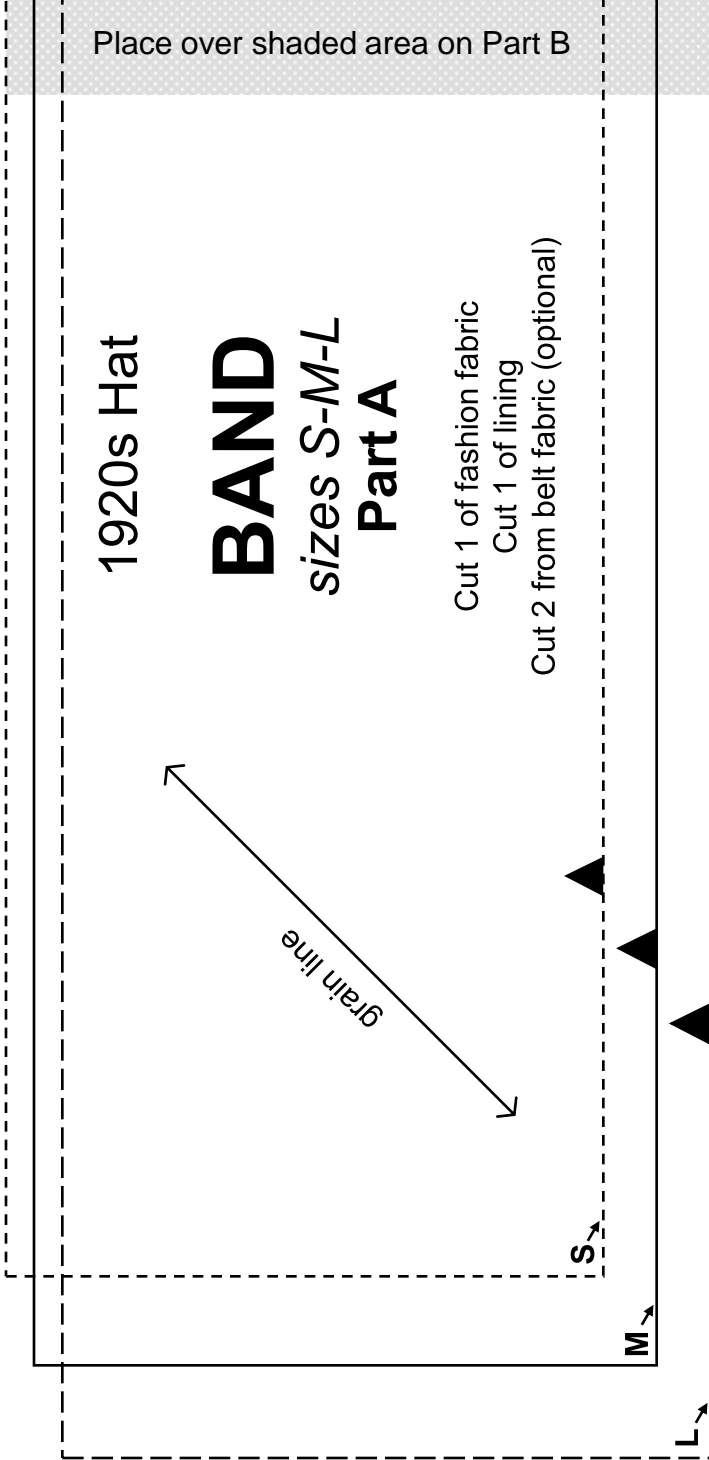
The pattern pieces are designed to be printed at 100%. Before printing the patterns, make sure that page scaling is set to none in Adobe Acrobat print window. To be sure that your patterns are going to print at the correct size, measure the box on the first pattern page. It should measure exactly 1 inch by 1 inch.

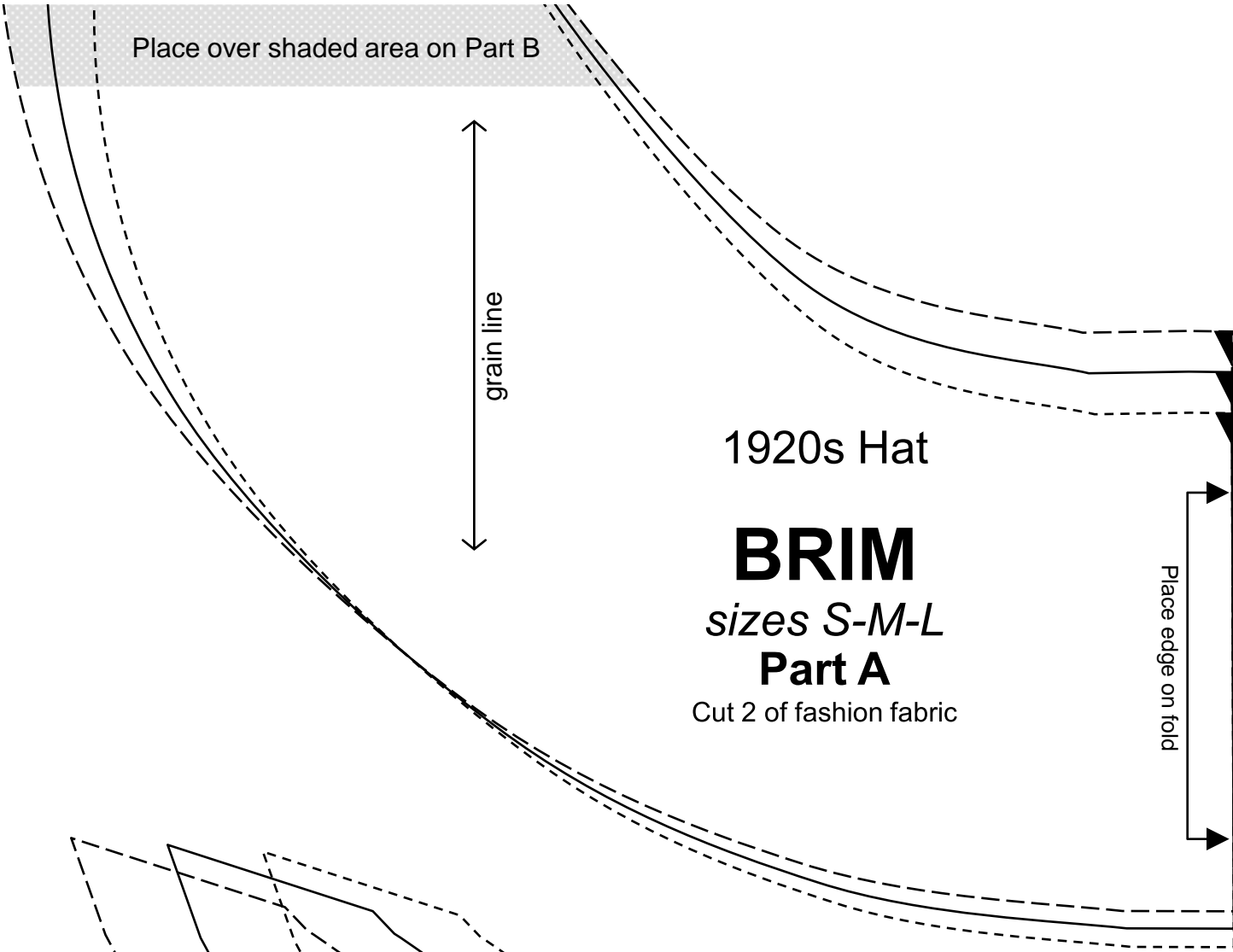


1 x 1









Place over shaded area on Part B

grain line

1920s Hat

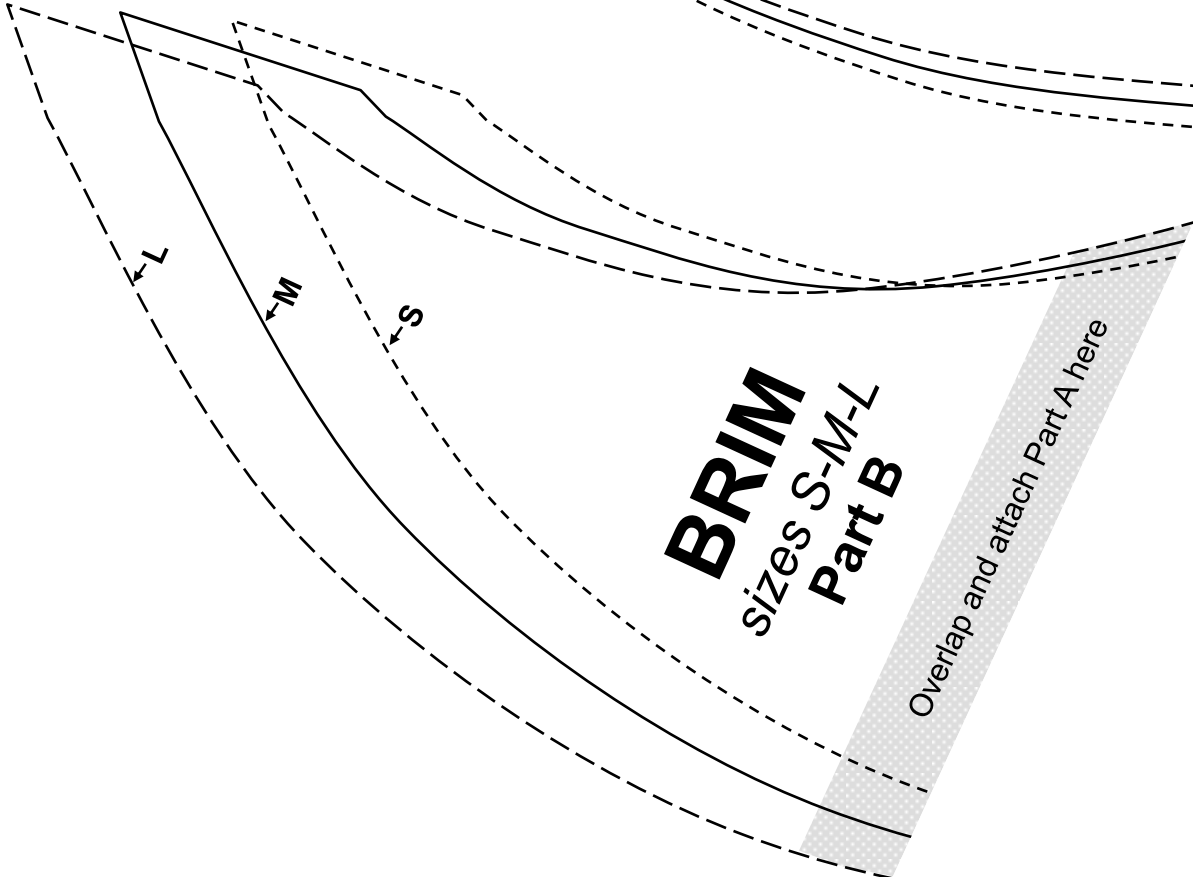
**BRIM**

sizes *S-M-L*

**Part A**

Cut 2 of fashion fabric

Place edge on fold



**BRIM**  
sizes *S-M-L*  
**Part B**

Overlap and attach Part A here

L

M

S

